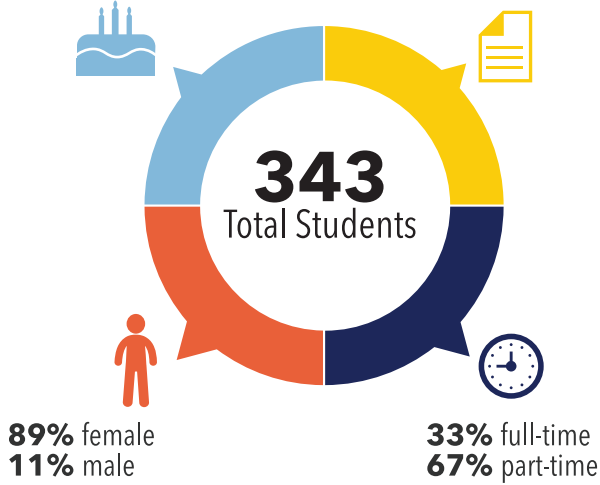


28.5 average age, 20 mode

9.7 average credit hours



6:1 student-to-faculty ratio

270 full-time equivalent (July '17-June '18)

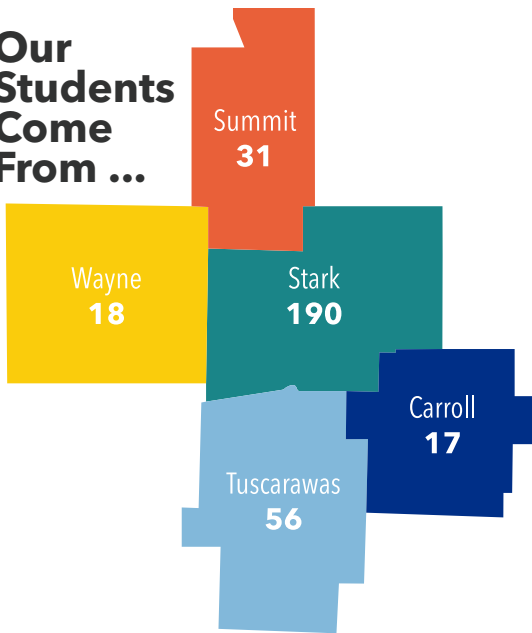
111 new students; **31%** first-timers

\$17.5K tuition per year (12-18 cr. hrs./semester)

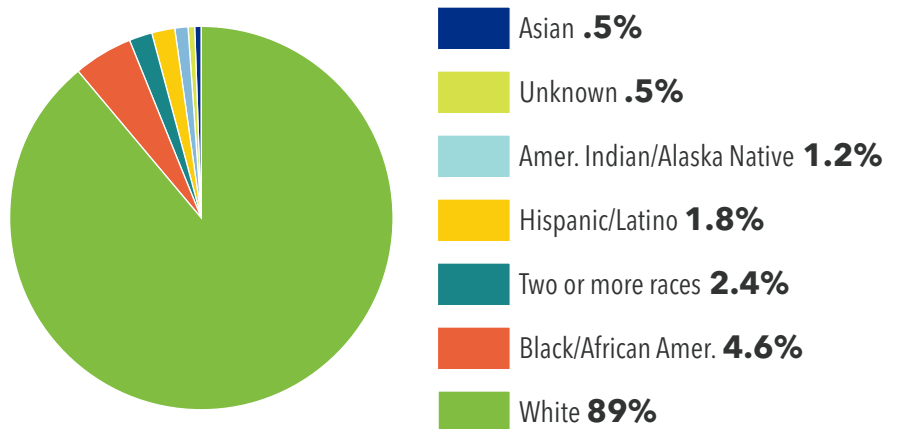
90.2% NCLEX pass rate (2017)

91% ARRT pass rate (2017)

Our Students Come From ...



Student Race and Ethnicity



Accreditations

Higher Learning Commission
Accreditation Commission for Education in Nursing (ASN)
Commission on Collegiate Nursing Education (CCNE)
Joint Review Committee on Education in Radiologic Technology (JCRT)

Program	Fall Headcount	Grads (Dec. '17-Aug. '18)	Alumni
College Credit Plus	14	N/A	N/A
Health Sciences (AS)	33	3	6
Health Sciences (BS)	13	Began Fall 2017	N/A
Nursing (AS)	103	63	887
Nursing (BS)	78	Began Fall 2017	N/A
Nursing Completion (BS)	62	23	68
Radiography (AS)	34	14	85
Social Work (BS)	6	Began Fall 2018	N/A